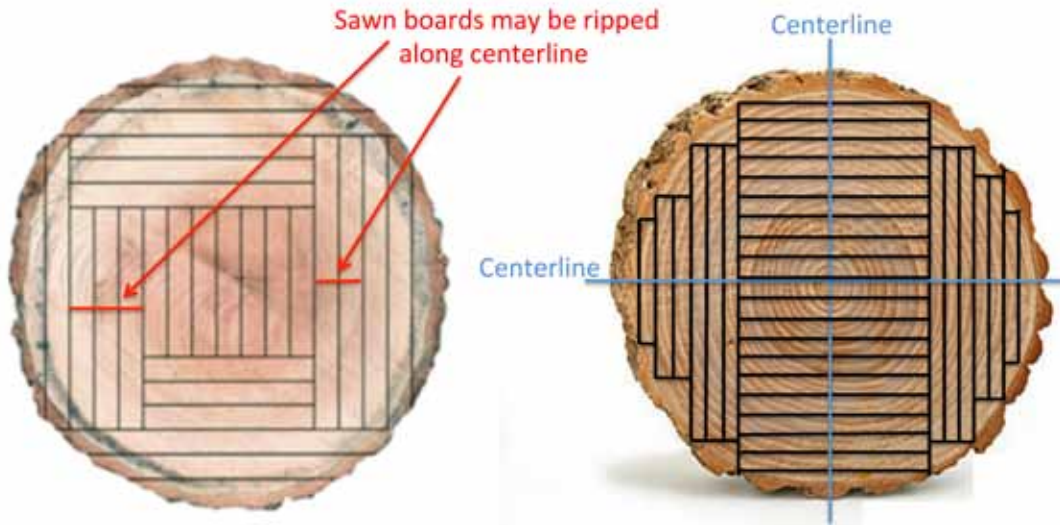


REGULAR VS. FRENCH-CUT



'REGULAR' or 'PLAINSAWN':

Yields a mixed grain appearance.
Cathedral peaks may be at edge of plank.
Generally yields more riftsawn and quartersawn material.

'FRENCH CUT':

Cathedral peaks are centered on plank.
Only boards from center of log will show quartersawn fleck.